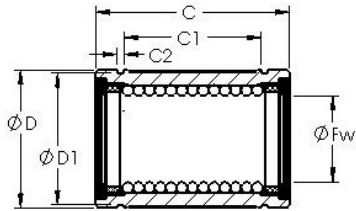
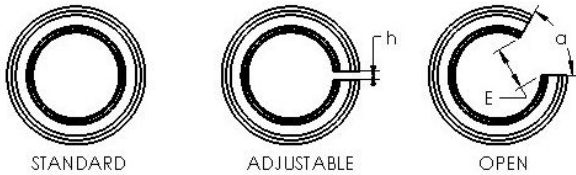




**AST LBB 24 UU linear bearings**



Bearing No. LBB 24 UU



|                              |                                   |
|------------------------------|-----------------------------------|
| Bore Diameter                | 38,1 mm                           |
| Bearing Type                 | sealed, standard type             |
| Dynamic Load Rating (Cr)     | 553                               |
| Static Load Rating (Cor)     | 1,245                             |
| Shaft Dia. (Fw)              | 1.500                             |
| Outside Dia. (D)             | 2.375                             |
| Length ( C )                 | 3.000                             |
| Groove-to-groove length (C1) | 2.412                             |
| Groove Width (C2)            | 0.086                             |
| Groove Dia. (D1)             | 2.265                             |
| Weight (g)                   | 535.00                            |
| Material                     | 52100 chrome steel, or equivalent |

LBB 24 UU Bearing 2D drawings and 3D CAD models