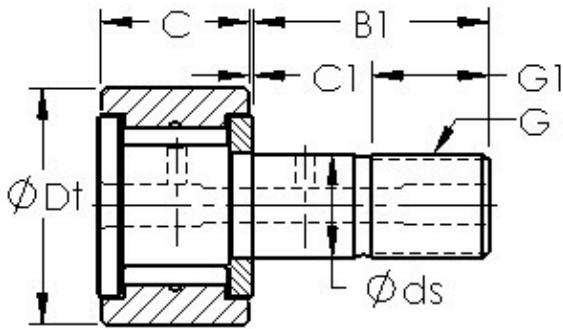




PCD?ITALIA ?Limited



AST CF12 needle roller bearings

Bearing No. CF12

| Bearing Type | Full Complement |
|--|----------------------------------|
| Dynamic Load Rating (Cr) | 1,210 |
| Static Load Rating (Cor) | 1,780 |
| Max Speed (Grease) (X1000 RPM) | 6,000 |
| Tire Outer Dia. (Dt) | 0.750 |
| Stud Dia. (ds) | 0.375 |
| Tire Width (C) | 0.500 |
| Tire Washer Width (C1) | 0.031 |
| Total Length (B) | 1.406 |
| Stud Length (B1) | 0.875 |
| Threads (G) - 3/8-24 UNF | 3/824 UNF |
| Thread Length (G1) | 0.375 |
| Weight (g) | 34.00 |
| Material - Stud and Roller head: Hardened carbon steel alloy, Needle rollers | 52100 Chrome steel or equivalent |

CF12 Bearing 2D drawings and 3D CAD models